



# JAUNDICE OUTBREAK IN BORNO STATE

## Weekly Situation Report No.8: August 22 2017

### Borno State Ministry of Health



#### Highlights

- ✓ 52 cases of Jaundice were seen at Health Facilities in Borno State in week 33.
- ✓ Six samples from cases of jaundice in Rann, Kala Balge were collected and awaiting result.
- ✓ Outbreak coordination meeting continues to hold in Maiduguri on Tuesdays.

#### Epidemiological summary:

- ✓ The total number of jaundice cases reported is 874: 697 (Ngala), 71 (Mobbar), 62 (Monguno). Jaundice cases were also reported in Chibok (7), KalaBalge (6), Askira Uba (5), Maiduguri (5), Mafa (4); Damboa (3); Dikwa(3), Gubio (3), Konduga (3), Bayo (2), Guzamala (1), Gwoza (1) and Shani (1). Please note that no specific update was communicated from Mobbar, awaiting for the updated linelist.
- ✓ 6 samples collected from cases of jaundice in Rann, Kala Balge..
- ✓ Five (5) deaths were reported among suspected cases; three (3) in Ngala and one (1) each in Mafa and Mobbar LGAs.

A total number of 341 samples have been collected and sent to LUTH laboratory; of these 42 tested positive while the result of 273 samples are being awaited.

SN	Description	Ngala	Mobbar	Monguno	Other LGAs	Total
<b>Cases</b>						
1	<b>Total cases (suspected + confirmed)</b>	<b>697</b>	<b>71</b>	<b>62</b>	<b>54</b>	<b>877</b>
2	Total Laboratory confirmed	30	9	3	0	42
<b>Deaths</b>						
4	Total deaths in confirmed cases	0	0	0	0	0
5	Total deaths in suspected cases	3	1	0	1	5
6	<b>Total Deaths</b>	<b>3</b>	<b>1</b>	<b>0</b>	<b>1</b>	<b>5</b>
<b>Laboratory</b>						
7	Number of specimen pending	163	48	25	37	273
8	Total specimen tested positive	<b>30</b>	<b>9</b>	<b>3</b>	<b>0</b>	<b>42</b>
9	Total specimen tested negative	15	5	4	2	26
10	<b>Total specimens collected</b>	<b>208</b>	<b>62</b>	<b>32</b>	<b>39</b>	<b>341</b>

Table 1: Number of cases, deaths and laboratory diagnosis of jaundice cases as of 7 August 2017

The number of jaundice reported in Borno state from epidemiological week 33 has peaked in week 27 with 148 cases and has been on the decline until week 32. An increase of the number of jaundice cases has been detected in Ngala in week 33 (52 cases). The epidemiological curve by date of onset peaked twice in week 26 and week 28.

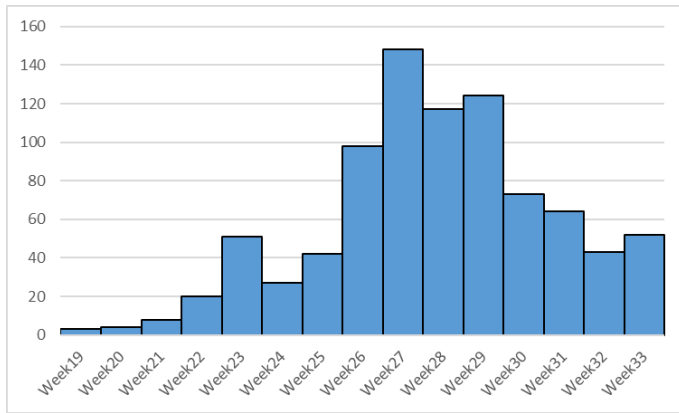


Fig. 1a Epidemiological curve of jaundice cases in Borno state by date of report as of week 33

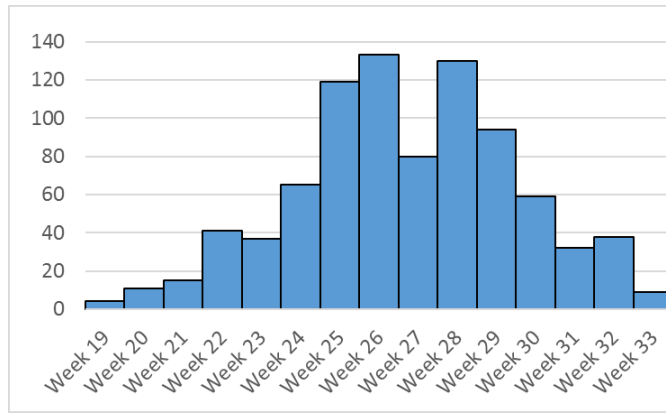


Fig 1b Epidemiological curve of jaundice cases in Borno state by date of onset as of week 33

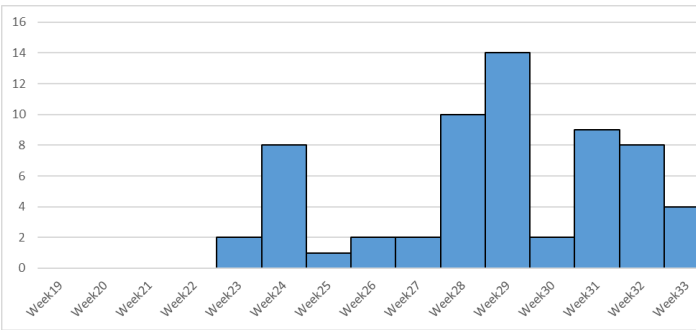


Fig 4: Number of jaundice cases seen at health facility in Monguno as of week 33

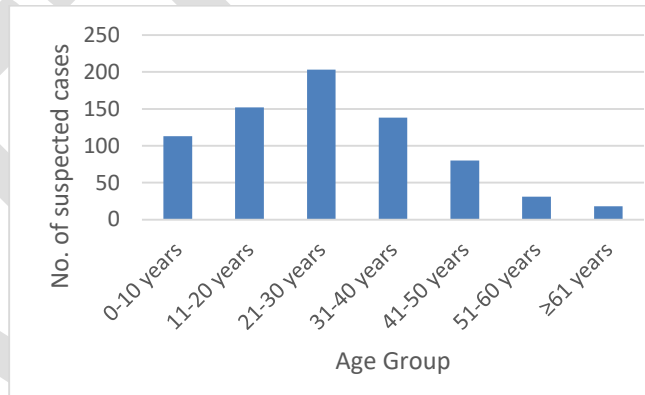


Fig 5: Age distribution of hepatitis E cases as of week 31

**Response:**

**Coordination**

- ✓ Weekly state outbreak coordination meeting continues to hold. With the State thematic team leads for each thematic area coordinating the response activities.

**Case Management**

- ✓ Three (3) case management facilities situated in Ngala LGA managed by MSF-Swiss, UNICEF and FHI360 clinics are managing HEV patients.

**Surveillance**

- ✓ Active surveillance continues in all affected and neighbouring LGAs and retrospective reporting are ongoing
- ✓ Community surveillance in with referral to health facilities.
- ✓ Enhance surveillance activities in other LGAs.

**Laboratory**

- ✓ 341 specimen collected for analysis; 42 positives, 26 negatives and 273 are pending.
- ✓ The LUTH laboratory has run out of reagents, procured reagents are in transit.
- ✓ To collect sample systematically – All pregnant women with Jaundice and cases presenting with fever.

### **Risk Communication and Social Mobilization**

- ✓ IEC posters for Hepatitis E in three languages (English, Hausa and Kanuri) were distributed to all the health facilities in the affected LGAs, containing information on hygiene promotion and prevention of the disease.
- ✓ House to house community sensitization is still ongoing in Ngala LGA for hygiene promotion and prevention measures

### **WASH/BOSEPA Response**

In Ngala,

- Completed construction of 80 blocks of latrines (400 latrines) and 40 blocks of showers (200 showers) at international school IDP camp.
- Completed construction of 40 blocks of latrines (200 latrines) and 20 blocks of showers (100 showers) in Arabic school camp.
- Completed rehabilitation of 2 water points with 24 taps each at International school IDP camp and completed rehabilitation of 2 water points with one having 48 taps and another with 24 taps in Arabic School IDP camp.
- Daily general camp cleanup by community members with supervision from Community Volunteers and FHI360 WASH staff.
- There is ongoing Day to Day hygiene promotion by Community Volunteers with messages focused on Hep E.
- Community members together with community volunteers have constructed 8 waste collection pits within the camp for waste disposal which are currently in use by community members under FHI360 supported WASH Activities.
- Completed distribution of 2500 hygiene kits (*comprising of 24 pcs of laundry soap, 24 pcs of bathing soap and one jerry cans*) out of 6,000 hygiene kits planned to reach out to 6,000 Households in International School IDP camp and Arabic camp (under Hepatitis E response).
- Conducted session with pregnant women at antenatal clinics
- Conducted house to house visit and Referrals of HEP E suspected cases to clinic
- Clearance of blocked exit for drainages channels, jerrycan cleaning campaign, drainage clearance campaign (Cash for work) and Bacteriological testing of water sources.
- Chlorination of main motorized borehole at international school camp.

### **IOM WASH Intervention**

- Started the construction of 250 (50 blocks of 5 compartment) latrines in international school IDP camp Ngala.

### **Challenges**

- ✓ Limited access in the high risk LGAs due to security concerns.
- ✓ Results not yet available from the reference lab.
- ✓ Heavy rainfall and flooding preventing conduct of activities in some of the affected LGAs.
- ✓ Inadequate number of LGA PHC staff available in the affected areas due to insecurity and poor accommodation facilities

### **Planned activities**

- ✓ **Visit to Rann to assess response activities in Rann**
  - Identify and collect more blood sample from HEV suspects,
  - LGA RRT members in Rann to continue active case search and sample collection.
  - Briefing of LGA RRT members.
- ✓ **WASH:**

- Training of 60 additional Community Volunteers commenced from 21<sup>st</sup> to 24<sup>th</sup>, August for hygiene promotion and waste management (International School and Arabic School IDP Camp).
  - Treatment of water sources still ongoing
  - Re-enforce WASH activities in Rann
- ✓ Social mobilization and health promotion:
- Production and distribution of more IEC materials
- ✓ Case management
- Onsite re-training for clinicians especially in Rann.
  - Distribution of updated case management protocol in Rann.
- ✓ **Surveillance :**
- Provision of data collection tools to LGA RRT in Rann.
  - Continue to strengthen surveillance (including community based surveillance)
  - Continue to conduct active case-search in IDP camps and communities for hepatitis E in Rann.
  - Strengthen and monitor border surveillance activities:
    - Sensitization of the Immigration and military at the border post in Rann.
    - Educate border military, customs and immigration authorities. Continue to raise awareness of Hepatitis E

