



## Situation Report of Cholera Outbreak in Borno State No. 11: 16<sup>th</sup> September 2018 Borno State Ministry of Health

### Highlights

- 65 additional suspected cases of cholera were reported on the 16<sup>th</sup> of September 2018 in Borno State
- 2 new deaths reported from Jere and Magumeri LGAs

### Epidemiological Summary

The total number of suspected cholera cases reported as at 16<sup>th</sup> September 2018 stands at 1,430, with associated 27 deaths, (CFR – 1.8%). 538 in Jere, 290 in MMC, 280 in Magumeri, 29 in Kaga, 70 in Konduga, 105 in Chibok, 11 in Shani, 13 in Damboa and 3 in Ngala LGAs. No additional case reported from Kaga, Konduga and Shani, while still awaiting feedback from Damboa LGA.

Out of the 102 samples collected and tested in the state using RDTs, 72 (70%) were positive while 11 (25%) of 44 samples were culture positive.

	Jere	MMC	Magumeri	Kaga	Konduga	Chibok	Shani	Damboa	Ngala	TOTAL
<b>Cases</b>										
New cholera suspected cases	40	11	9	0	0	2	0	-	3	65
Cumulative cholera suspected cases	538	290	280	29	70	105	11	13	94	1,430
<b>Deaths</b>										
New deaths	1	0	1	0	0	0	0	0	0	2
Cumulative deaths	7	5	5	1	3	4	0	0	2	27
<b>Laboratory</b>										
Number of specimen Tested	15	23	12	10	7	20	3	5	7	102
Specimen Positive RDT	11	17	9	8	5	11	1	3	7	72
Specimen Positive Culture	4	4	0	0	0	2	0	0	1	11

*Table 1: Number of cases reported as of 16<sup>th</sup> September 2018.*

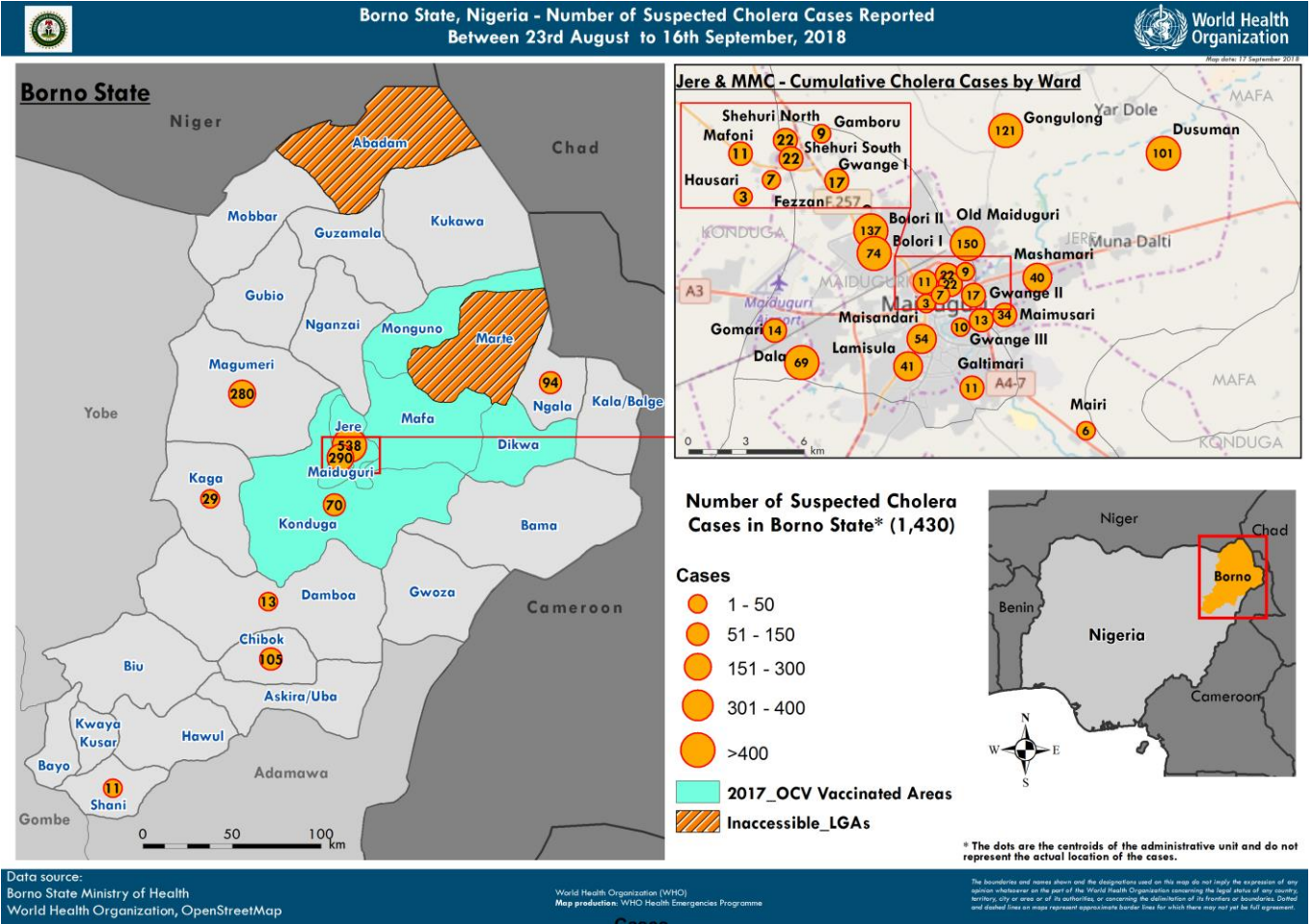


Figure 1: Map of Borno state showing affected LGAs in Borno State.

65 additional suspected cholera case were reported from 5 LGAs, Jere, MMC, Magumeri, Chibok and Ngala LGAs on the 16<sup>th</sup> September 2018. The total number of suspected cases reported in the state so far is 1,430. Jere LGA has reported a total of 538 suspected cases, MMC 290 and Magumeri 280 (see Table).

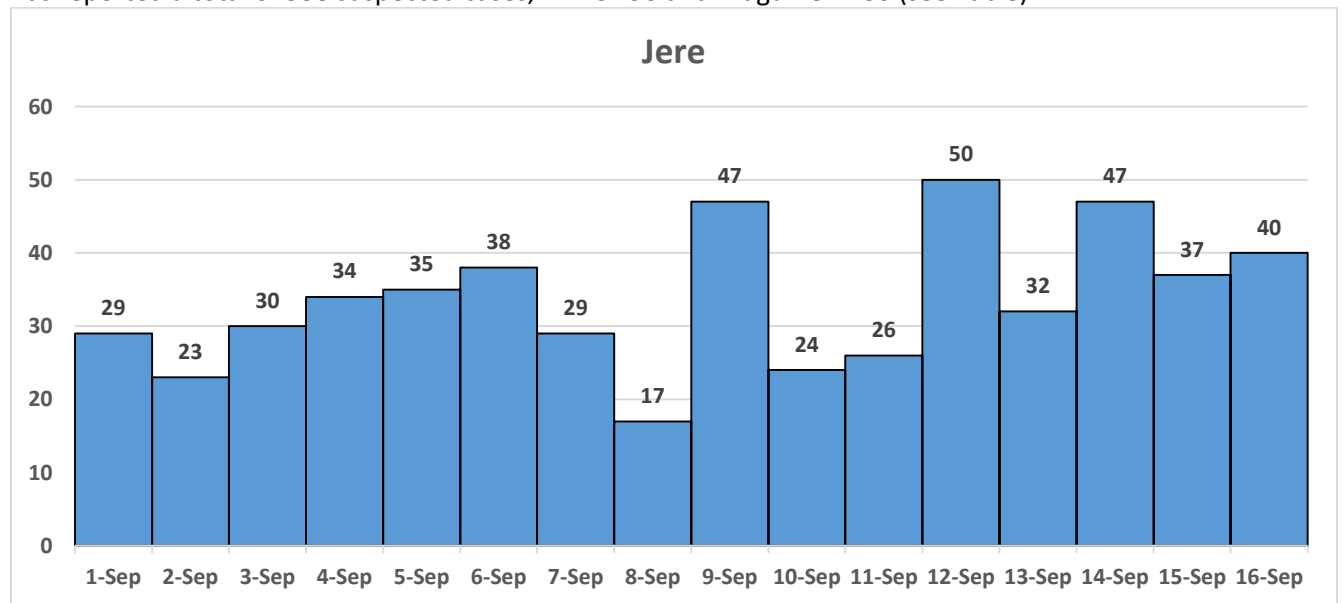


Figure 2: Daily Epi-curve of cholera cases showing number of suspected cases in Jere LGA

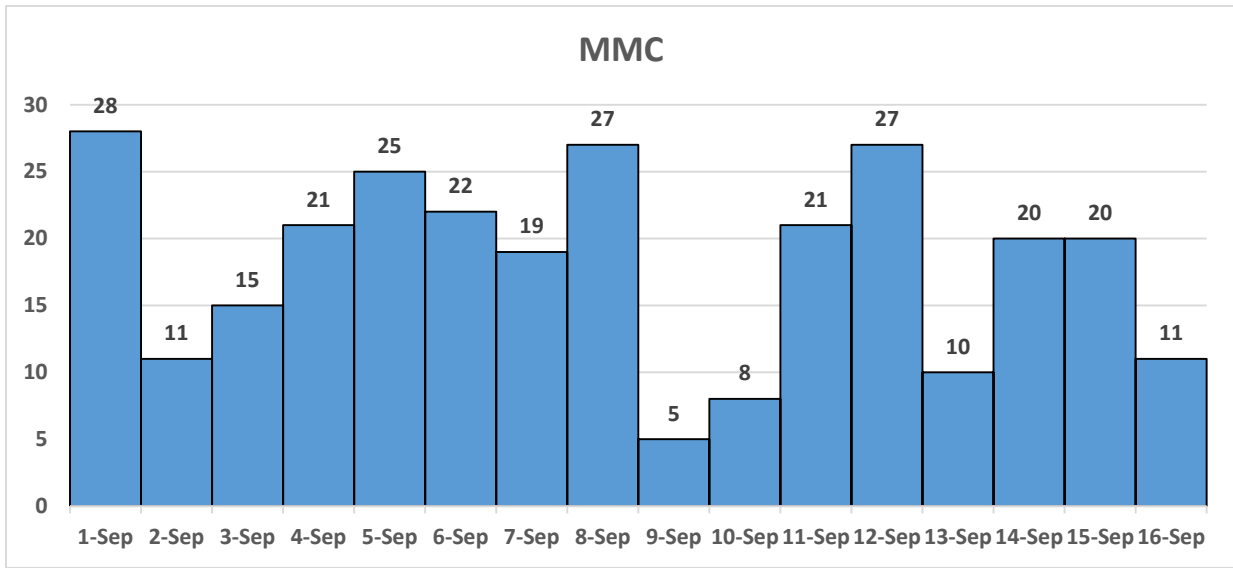


Figure 3: Daily Epi-curve of cholera cases showing number of suspected cases in MMC

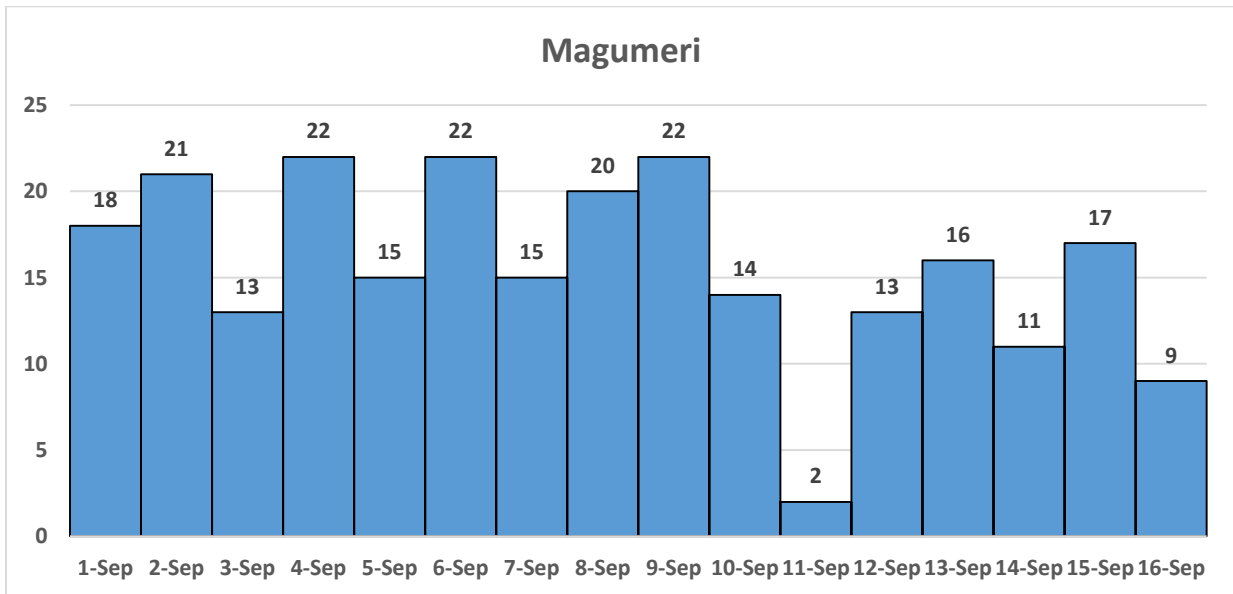


Figure 4: Daily Epi-curve of cholera cases showing number of suspected cases in Magumeri LGA

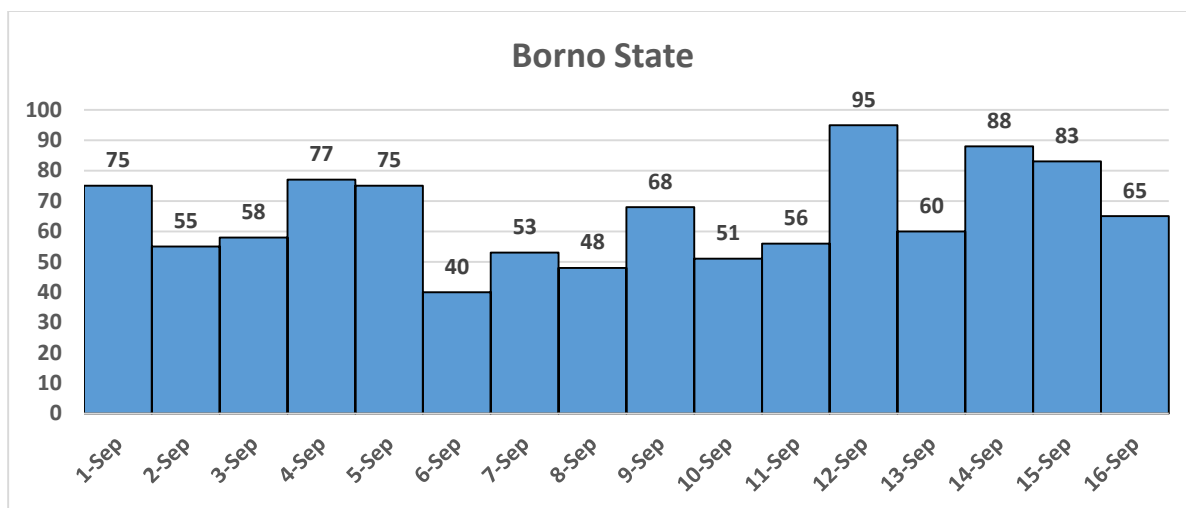


Figure 5: Daily Epi-curve of cholera cases showing number of suspected cases in Borno State

## Response

### 1. Surveillance

- Active Case Search intensified in all affected locations
- WHO supported volunteers conducting House to House case search covered 3,352 Households in Dusuman, Old Maiduguri, in Jere LGA and Bolori I & II, Bulabulin, Fezzan, Gamboru and Lamisula in MMC, identified 154 suspected cases and referred 47 to CTC/ORP
- WHO HTR teams still supporting Active Case Search in Benisheik, in Kaga, Chibok and Gajigana in Magumeri LGAs
- Distribution of Cholera RDTs and sample collection materials to treatment sites, partners and LGA DSNOs/LGAFs by WHO
- Priority locations identified and communicated to WASH and risk communication teams for priority intervention are Dala, Dusuman, Gongulong and Old Maiduguri in Jere LGA while in MMC priority locations Limanti, Bolori 1&2, Bulabulin, Gwange 1 and Lamisula. Gajigana still remains the priority location in Magumeri LGA. Another priority location identified is Ngala, as cases are being reported in IDP camp.

### 2. Case management

	CTC Dala	ORP EL-Miskin	PHC Gajigana	Total
<b>Admissions</b>				
New admissions	122	7	7	<b>136</b>
Number on Admission	83	4	7	<b>94</b>
New Discharges	68	3	0	<b>71</b>

- The number of intervention site are 5 at present. 1 CTC, 1CTU and 3 ORPs; CTC Dala in Jere LGA (MSF Belgium). 1 CTU in Model PHC Gajigana, Magumeri (supported by WHO, IRC and INTERSOS), ORP in El-miskin, Jere LGA (Supported by MDM).

### 3. WASH

- Hygiene promotion and education on hand washing, dangers of open defecation ongoing in identified priority locations by WaSH sector partners and Community Health Volunteers supported by WHO.

- UNICEF/RUWASSA RRT were in Mboakura community, Chibok LGA
- Reached 560 people from 170 households and affected Households (HH) were sprayed.
- 4 hand dug wells were disinfected and sample taken for analysis and all were coliform bacteria positive.
- In Kurumbula Chibok, 16 wells tested positive for coliform.
- H/H disinfection was carried out in the community.
- 2 cartoons of aqua tabs were distributed to community members.
- Hygiene Education on sanitation behaviors was given to the HHs and reminded to always wash their hands at critical times.
- 11 cases of AWD were referred by RRT team to Dala clinic. Affected victims' houses and neighborhoods were disinfected using chlorine.
- Provided aqua tablets and sensitized the HHs on good sanitation and hygiene practices.

#### **4. Social Mobilization**

- Radio messages ongoing in 4 languages (Hausa, Kanuri, Shuwa and Bura) in media houses within Borno
- Community sensitization and risk communication is ongoing by the LGA teams, WHO HTR teams, Community Health Champions and the State social mobilization team.
- Regular mosques announcement by Jumaat and Daily Prayer Imams are ongoing in Gongolong ward (Mallam Kolo, Goni Kolo and mallam Abatcha mosques) and Madinatu mosques in Jere LGA
- Sensitization of community leaders and household heads by LGA social mobilization team is ongoing in Bolori, Fezzan and Maisandari Wards
- Distribution of Cholera IEC materials is ongoing in identified hotspots

#### **5. Coordination**

- Public Health EOC Bi-weekly cholera outbreak coordination meeting is ongoing
- All affected LGAs to commence daily coordination meetings